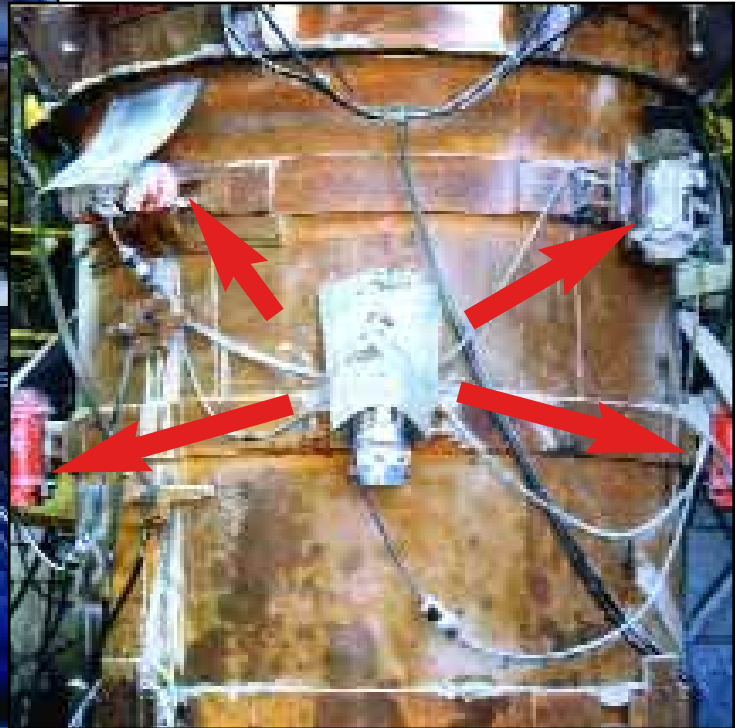


LARGE CONCRETE PIPE FORMS



DID YOU KNOW?

VIBCO offers free plant surveys.
Call 800-633-0032 today
to set up an appointment!

VIBRATORS MOST COMMONLY USED

PNEUMATIC: The High Frequency Model SVRL(S)-4000, 5500, 8000 are by far the most popular vibrators for large concrete pipe. These units require the least amount of maintenance, are light and easily portable. The high frequency will place the concrete fast, give excellent surface finish and strength. (See page 6 & 7 for technical data).

ELECTRIC: VIBCO Model 2P-3500 and 2P-5500 totally enclosed units are especially designed for the concrete pipe industry. These units have adjustable force up to 4500 lbs. for 2P-3500, 5500 lbs. for 2P-4500, and 6500 lbs. for 2P-5500. These units have specially treated windings to withstand mechanical failure and Class F High Temperature insulation to withstand considerable overload. These units have two roller bearings for long life. They can be mounted with rotor shaft vertically or horizontally. They are made in the U.S. and follow NEMA & ASTM standards. All parts are available from the factory. (See page 16 and 17 for technical data.)

MISC. SMALL PIPE FORMS



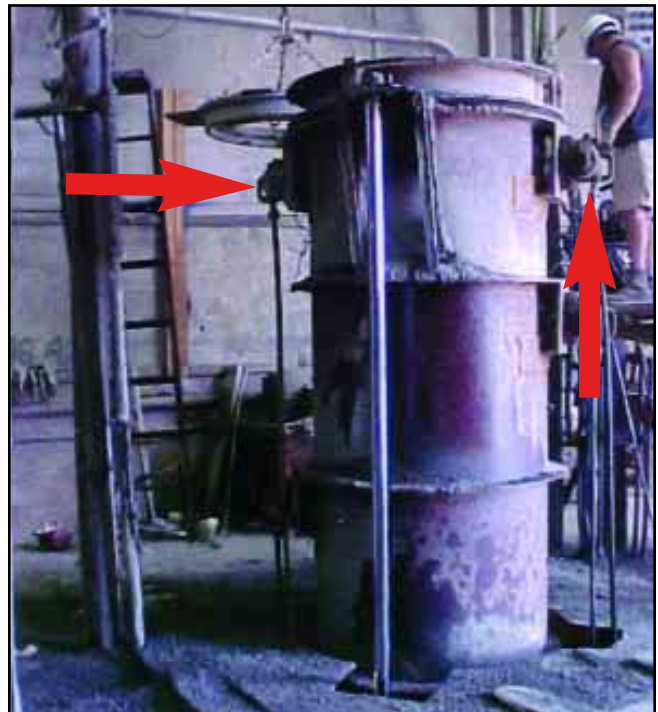
High slump concrete using **SVRWS-4000** (page 3). High frequency pneumatic vibration was used. VWF-female brackets were welded to form - 2 per form - one low and one high - opposite sides.



Model SVRLS-5500 on pipe form.



Model SVRLS-6500 on pipe form.



Model SVRLS-6500 on pipe form.

SELECTION OF VIBRATORS

GENERAL RULE FOR MISC. SMALL PIPE FORMS:

3-6" Slump (from ready mix truck) - vibrator force needed - same as total weight of concrete and form—vibrators to be used. 2P-Line of heavy duty electric vibrators and US-Line (page 16-17), pneumatic type model SVRL, CCL & VS lines (page 2-16).

0-2" Stiff concrete - vibrator force needed 2 times total weight of concrete and form. **NOTE:** Vibrators must be placed within a 3' radius of each other, high frequency vibrators must be used to make concrete flow and consolidate. Vibrators to be used US-Line of electric (page 16-17) pneumatic SVR-Line of high frequency (page 14-15).

VIBCO'S APPLICATION ENGINEERS WILL HELP YOU WITH SELECTION AND MOUNTING.